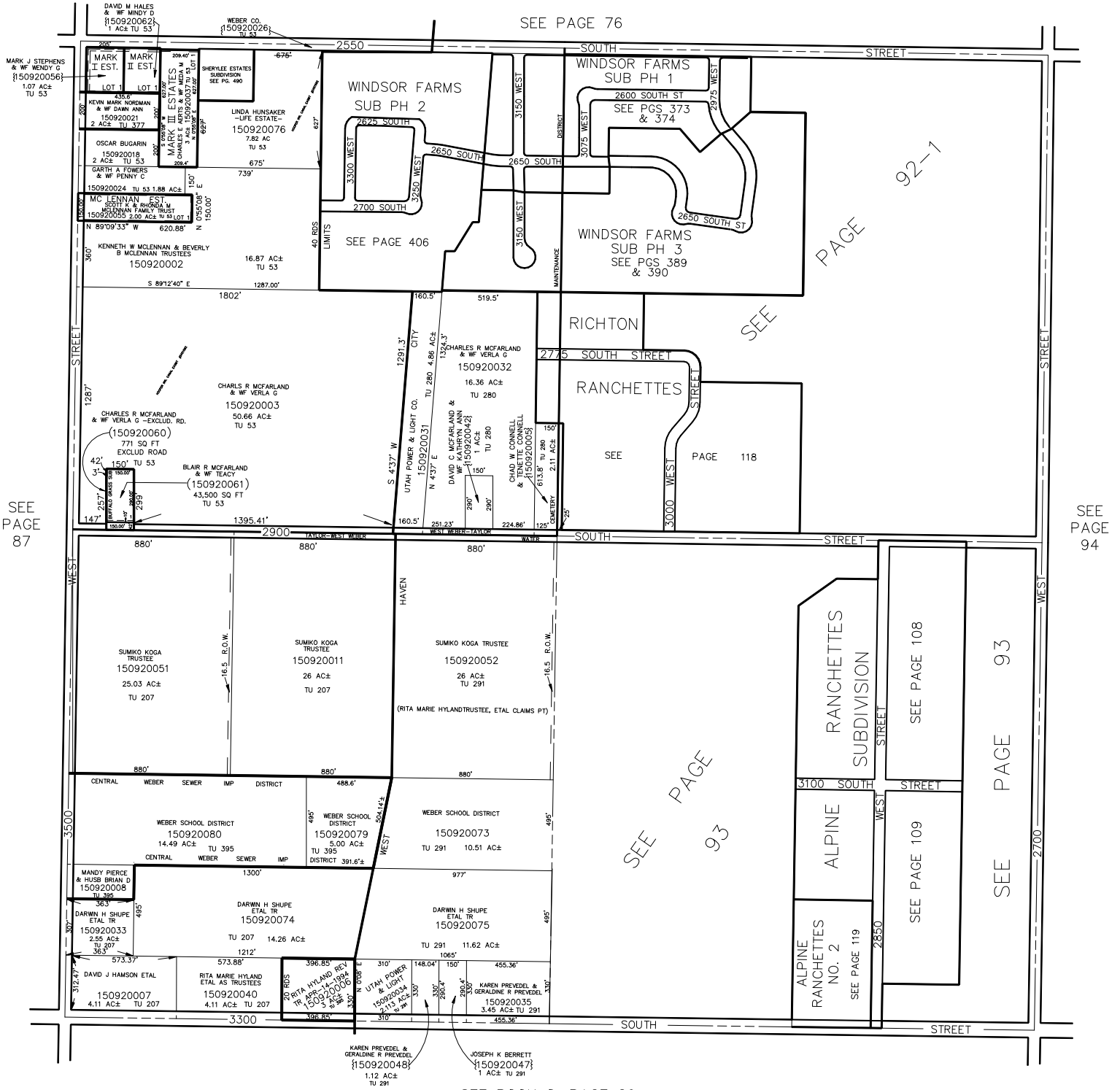


SECTION 34, T.6N., R.2W., S.L.B. & M.

IN WEST HAVEN CITY & WEBER COUNTY

TAXING UNIT: 53, 207, 280, 291, 377, 395, 421

SCALE 1" = 400'



SEE PAGE 87

SEE PAGE 94

SEE PAGE 93

SEE PAGE 93

SEE BOOK 8, PAGE 29